

CASHWRAP & TELE/DATA SYSTEM NOTES

- REGISTERS SHALL SHARE A 20 AMP, 120 VOLT DEDICATED CIRCUIT WITH A SEPARATE ISOLATED & 3RD WIRE GROUND. STUB UP 3/4" CONDUIT 1" (A.F.F.) WHERE SHOWN ON DETAIL. INSTALL FLEXIBLE CONDUIT FROM STUB-UP TO JUNCTION BOX AND CONNECT TO DUPLEX RECEPTACLES. THE ELECTRICAL CONTRACTOR SHALL FURNISH ORANGE #6SS6Z RECEPTACLES (HUBBELL). CUT AND PATCH FLOOR AS REQUIRED TO ROUTE CONDUIT TO WALL AS SHOWN. ROUTE UP INSIDE WALL TO CEILING SPACE AND CONNECT TO PANEL LOCATED INSIDE IF'S ENCLOSURE. REFER TO POWER PLAN AND PANEL SCHEDULES FOR CIRCUIT DESIGNATIONS.
- 20 AMP, 120V, CIRCUIT FOR UTILITY POWER W/DUPLEX RECEPTACLE. STUB UP 3/4" CONDUIT 1" (A.F.F.) WHERE SHOWN ON DETAIL. INSTALL FLEXIBLE CONDUIT FROM STUB-UP TO JUNCTION BOX AND CONNECT TO DUPLEX RECEPTACLES. CUT AND PATCH FLOOR AS REQUIRED TO ROUTE UP INSIDE WALL TO CEILING SPACE AND BACK TO PANEL AS INDICATED ON POWER PLAN.
- STUB UP 3/4" CONDUIT 1" (A.F.F.). INSTALL FLEXIBLE CONDUIT FROM STUB-UP TO 4X4 JUNCTION BOX FOR DATA AND TELEPHONE. CUT AND PATCH FLOOR AS REQUIRED TO ROUTE CONDUIT TO WALL AS SHOWN. ROUTE UP IN WALL TO CEILING SPACE AND CONNECT TO TELECO STRUCTURE PORTION OF THE IF'S ENCLOSURE. WIRE FOR DATA LINES TO BE PULLED AND CONNECTED BY P.O.S. CONTRACTOR.
- 3/4" TELEPHONE CONDUIT WITH PULLWIRE TO TELEPHONE BOARD BY ELECTRICAL CONTRACTOR. #RJ14C JACK ON LINES #1 AND #2 FOR TELEPHONE BY OTHERS.

GENERAL NOTES

- REFER TO ARCHITECTURAL SHEET A11.1 FOR ADDITIONAL INFORMATION.
- WIRING DEVICES ARE SHOWN FOR REFERENCE ONLY. COORDINATE FINAL INSTALLATION LOCATION WITH LSD&C PROJECT MANAGER IN FIELD.
- DATA TERMINALS AND CONNECTIONS BY P.O.S. CONTRACTOR.
- RUN METAL CLAD (MC) CABLE TO EACH RECEPTACLE FROM JUNCTION BOXES THRU WIREWAY WITHIN CASHWRAP COUNTER.
- WIRING FROM CONDUIT STUB-UPS TO JUNCTION BOXES ARE TO BE RUN IN FLEXIBLE CONDUIT.
- LABEL AND TAG ALL PULLWIRE RUNS AT EACH END WITH ORIGIN/DESIGNATION.
- IF FRONT PORTION OF CASHWRAP IS ADJACENT TO A WALL, CONTRACTOR SHALL ROUTE CONDUIT FROM THE BACKWRAP TO THE FRONT CASHWRAP THROUGH THE WALL ADJACENT TO CASHWRAP INSTEAD OF ROUTING THROUGH FLOOR.

WHITE BARN CASHWRAP

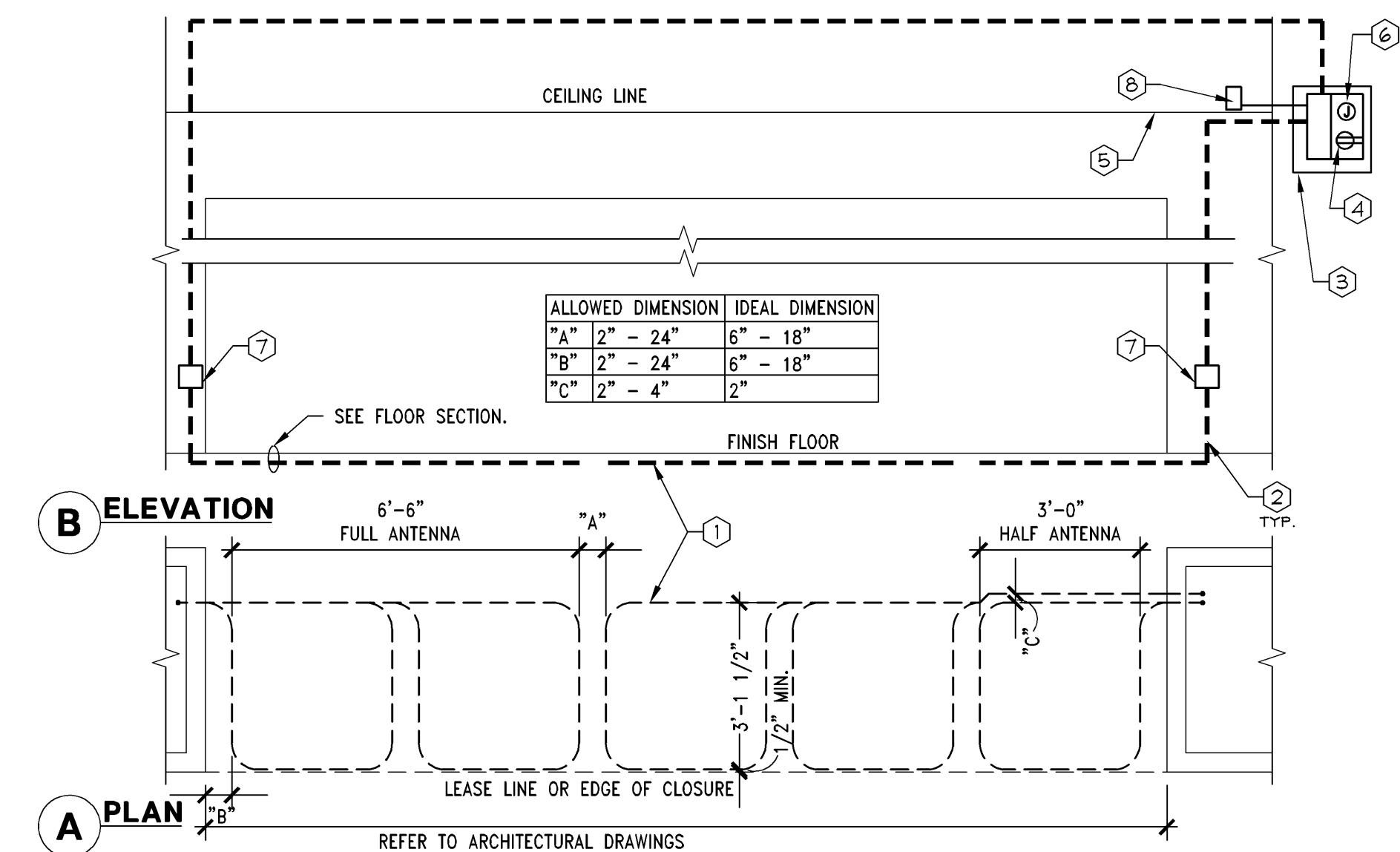
1/2" = 1'-0"

42D-E042-G01-CA4R

WHITE BARN BACKWRAP

3/8" = 1'-0"

42D-E042-E05-P8B3



NOTE:
CONTRACTOR MUST VERIFY AN UNOBSTRUCTED MINIMUM FREE AREA OF 5' VERTICALLY AND 5' WIDE IN EVERY DIRECTION ABOVE THE ACCESS PANEL TO ALLOW FOR INSTALLATION OF THE SENSORMATIC POWER PACK AND CAP ENCLOSURE BOXES. IF FREE AREA CANNOT BE OBTAINED IN THIS LOCATION, IMMEDIATELY CONTACT THE LSD&C PROJECT MANAGER FOR FURTHER INSTALLATION INSTRUCTIONS.

NOTE:
GENERAL CONTRACTOR SHALL COORDINATE THE INSTALLATION OF THE SENSORMATIC SYSTEM WITH SENSORMATIC MANUFACTURER SPECIFICATIONS AND INSTALLATION GUIDE.

NOTE:
PROVIDE 3/4" CONDUIT BETWEEN ALL DEVICES IN THE SYSTEM IF LOCAL CODE REQUIRES ALL LOW VOLTAGE WIRE TO BE IN CONDUIT.

NOTE:
DO NOT COIL EXCESS WIRE OR CABLE IN CEILING. DOING SO WILL CAUSE FALSE ALARMS.

FLOOR SECTION

SENSORMATIC FLOOR ANTENNA SYSTEM NOTES

- BRACKETS / TRANSCIVER CABLES.
- ROUTE CABLES FROM BELOW FINISH FLOOR UP WALL TO CAP ENCLOSURE BOX. CABLES ABOVE CEILING SHALL BE ROUTED CLEAR OF ACCESS OPENING.
- GC TO MOUNT 24"x24" PLYWOOD PANEL ABOVE CEILING OR IN FULLY ACCESSIBLE STOREFRONT VOID AREA AT 48" AFF FOR EQUIPMENT MOUNTING. USE FRT PLYWOOD IF REQUIRED BY CODE.
- DUPLEX RECEPTACLE IN NEMA 1 ENCLOSURE, SIZED PER CODE, LOCATED ON PLYWOOD PANEL. ELECTRICAL REQUIREMENTS ARE 120V, AC, THREE WIRE, 24 HOUR DEDICATED CIRCUIT WITH LESS THAN 0.5V, AC BETWEEN NEUTRAL AND GROUND.
- RETURN AIR GRILLE, ACT CLG., OR ACCESS PANEL TO BE USED FOR SERVING OF EQUIPMENT WHEN LOCATED ABOVE CEILING. COORDINATE LOCATION WITH THE GENERAL CONTRACTOR. GRILLE/ACCESS PANEL MUST BE 24" BY 24" MINIMUM.
- JUNCTION BOX ON PLYWOOD PANEL WITH 120V, AC POWER FOR FINAL CONNECTION TO SENSORMATIC POWER PACKS. INSTALLATION OF POWER PACKS AND PLUG-IN OF PACKS TO RECEPTACLE BY SENSORMATIC.
- CAP BOX ENCLOSURE. DISTANCE FROM CAP ENCLOSURE TO ANTENNA SHALL BE MAX 20". MOUNT CAP BOX ABOVE CEILING OR IN ACCESSIBLE STOREFRONT VOID AREA WHEN POSSIBLE. OTHERWISE MOUNT AT 18" AFF AND COMPLETELY CONCEAL IN WALL WITH 12"x12" ACCESS PANEL. MAXIMUM LENGTH FROM CAP ENCLOSURE TO THE CONTROLLER/POWER PACK IS 40' OF CABLE.
- REMOTE ALARM. GC TO ENSURE A RETURN AIR GRILLE OR SPEAKER SCREEN IS INSTALLED IN THE CEILING NEAR BY TO ALLOW TRANSMISSION OF SOUND. ALARM SHALL NOT BE VISIBLE THROUGH GRILL OR SCREEN.

3/8" = 1'-0"

05D-E043-A03-SENS